



TE

Volume 68 Issue 4

Nov/Dec/Jan 2009-10

President's Corner

Hello everyone! I hope all of you had a good summer, especially since the summer season was not the best. Now there are beautiful fall-colored trees and the holidays are just around the corner. Everyone will be busy baking, shopping, etc. very soon.

REMINDER: The Pittsburgh Association of the Deaf was established in 1927 for the purpose of providing social, educational and athletics for the deaf and hard of hearing adults in Allegheny County and surrounding areas. To achieve this goal, over the years the PAD Board of Directors have developed and implemented athletic, social, educational, senior citizen and children's programs.

Throughout the years, PAD has attempted to keep this building, which was purchased in 1965, in good and safe condition by making all necessary repairs. The members take pride in keeping their club beautiful and a pleasant place for everyone. Out-of-towners who visit the club are truly very impressed with the size and condition of the club. PAD is the only facility owned and operated by the deaf for the sole purpose of providing deaf and hard of hearing persons access to social, recreational and athletic activities so readily available to their peers. PAD strongly believes in self-help efforts. All members should be very proud that our club still standing.

Today, one can see the improvements made in our deaf club. The goal of the members is to continue to serve the needs of the deaf and hard of hearing with youth leadership in the very near future to ensure the strength of the membership for years to come.

Events in November: Banknight , Holiday Party, Pingo and ACE. The Active members' meeting is moved to November 21 at 6 p.m. due to a conflict with the Holiday Party on November 14, Steelers Party on November 22, Turkey Bash will be held on Wednesday, November 25.

Events in December: Banknight, Active meeting, Active Christmas dinner, Children's' Christmas party, Pingo and Christmas Bash on Wednesday, December 23 and New Years Eve Gala.

REMINDING YOU TO RENEW YOUR MEMBERSHIP DUES FOR 2010.

Hope all of you fulfill your holiday and New Year wishes. God Bless you.

Cheryl Noschese

From the Editor: Lori Ann LaSorsa

Hello Everyone,

Hope you all have great Holidays for Thanksgiving, Christmas and New Year's 2010!! May all have a Safe Holidays!!

Lori Ann LaSorsa

2009-2010 Annual PAD Membership Drive

It is time to renew your PAD Membership. You can see our Financial Secretary, Alex Lemanski to get the forms. Also, remember that your membership due will be included with 4 issues of PADette Newsletter.

Please don't wait for Alex Lemanski to tap your shoulder to remind you to pay the dues!! He has lots of work to be done and will be appreciated with your cooperation.

MEMBERSHIP TYPE	Due (by March 31, 2010)	Due(after April 1,2010)	New Member to Join
Active	\$35.00	\$40.00	
Associate	\$25.00	\$30.00	\$10.00
Life	\$10.00	\$15.00	
Senior Citizen	\$15.00	\$20.00	
College Student	\$10.00	\$10.00	

Please note that you will pay higher due on and after April 1, 2010. (Notes we DO NOT FOOL) you on April fool's Day!!! Also, remember that your subscription of PADette Newsletter will be temporarily suspended after March 31, 2010 unless you pay your due.

If you are **NEW** to join, you can only choose either Associate or College Student. An add \$5.00 membership Initiation fee to your membership due.

Make a check or money order payable to Pittsburgh Association of the Deaf. Please write "2010 Annual PAD Membership" after the memo on lower left corner of your personal check.

Mail to
Alex Lemanski
P.O.Box 81005
Pittsburgh, PA 15217-0505

DATE	August 1, 2009	September 5, 2009	October 3, 2009	November 7, 2009
B	160 Pts No Winner	180 Pts No Winner	200 Pts No Winner	220 Pts
I	500 Pts Robert Q. Willis # No Winner	520 Pts Donald Metley #1311 No Winner	540 Pts Gretchen Daberko #1016 No Winner	560 Pts
N	860 Pts Terry Matthews #1200 No Winner	880 Pts Sharon Hunter #237 No Winner	900 Pts Donald Metley #1311 No Winner	920 Pts
G	160 Pts Thomas White # No Winner	180 Pts Shawn Conner #287 No Winner	200 Pts Shirley Maines # No Winner	220 Pts
O	820 Pts Arline G Whitting #400 No Winner	840 Pts Harry Robale #371 No Winner	860 Pts Barbara Bolimos #205 No Winner	880 Pts

November 2009

Monday	Wednesday	Thursday	Friday	Saturday
2	4	5	Poker League 8:15pm 6	Bingo Night 7pm 7
ZVRS Town Hall Forum 6pm to 8pm Steelers vs Denver Open Bar 8:30pm 9	Senior Citizen 10am to 4pm 11	12	Poker League 8:15pm 13	Holiday Party At Moon Twp PAD Closed 14
16	18	19	Poker League 8:15pm 20	Active Mtg. 6pm PINGO Night 8:30pm 21
Sunday November 22 Steelers Party At Noon	Turkey Bash 8pm till?? 25	Happy Thanksgiving! 26	Poker League 8:15 pm 27	Poker Tourney 8:30pm 28

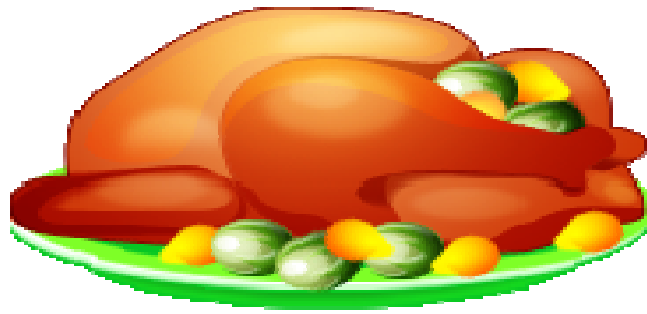
December 2009

Sunday	Wednesday	Thursday	Friday	Saturday
	2	3	Poker League 8:15pm 4	Bingo Night 7pm 5
6	Senior Citizen 10am to 4pm 9	10	Active Mtg Election Night 7:30pm 11	Active Holiday Dinner Party 5pm till Closed 12
GPCCD Christmas Children Party At 1pm to 5pm 13	16	17	Poker League 8:15pm 18	PINGO Night 8:30pm 19
20	Christmas Bash 8pm till?? 23	24	PAD Closed Merry Christmas 25	Poker Tourney 8:30pm 26
27	30	New Years Eve 8pm 31		

January 2010

Wednesday	Thursday	Friday	Saturday
		PAD Closed 1	Bingo Night 7pm 2
6	7	Poker League Finals 8:15pm 8	Active Meeting 7:30pm 9
Senior Citizen 10am to 4pm 13	14	Poker League New Session 8:15pm 15	PINGO Night 8:30pm 16
20	21	Poker League 8:15pm 22	Ace Night 8:15pm 23
27	28	Poker League 8:15pm 29	Poker Tourney 8pm 30

Turkey Bash



Wednesday

November 25, 2009

At P.A.D. 8 P.M.

Donations \$ 5.00

15 Gift Certificates Drawings

Host by P.A.D.

PAD/GPCCD Christmas Children's Party

For 12 years old and under



WHEN: SUNDAY, DECEMBER 13, 2009

TIME: 1-5PM

WHERE: PAD, 1854 FORBES AVENUE, PGH, PA

DONATION: MEMBER'S CHILD: \$10
NON-MEMBER'S CHILD: \$13 no pay at door

DONATION TO CCP ELVE: MARIA SHEPPECK
(Write a check to: GPCCD/P.A.D., and mail to 2828 School St, Ambridge, PA 15003)

RSVP and Donate by deadline: NOV 27, 2009

ACTIVITIES: CRAFTS, FAVOR BAGS and \$20 WORTH OF PRESENTS

The show will be Announcement soon ☺

FOOD SERVICE: WE WILL SERIVCE SPAGHETTI, SALAD, and
BREAD. CHILDREN WITH DRINK \$5 ALSO SERVICE FOR
ADULT \$7

Who want to be volunteer help with children any actives more Merrier and Appreciate
Thanks ☺

Holiday Bash



**Wednesday,
December 23, 2009**

at P.A.D. Club

Donations \$5.00

10- Giant Eagle Gift Cert.

5- Spirit Gift Cert.

Host by P.A.D.



P.A.D. 2010!

NEW YEAR'S EVE

**\$1,500.00 PRIZE GIVEAWAY
HAPPY HOUR 9PM TILL 11PM
REFRESHMENTS INCLUDED
COME AND CELEBRATE THE
NEW YEAR 2010!!!**

Date: Thursday, December 31, 2009

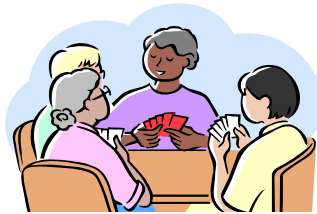
Time: 8:00 P.M. till Closing!!

Place: P.A.D Clubhouse 1854 Forbes Ave.

**Cost: Donation \$20.00
at Door \$25.00**

See P.A.D. Officers for Tickets

P.I.N.G.O Night



November 21, 2009 Start 8:30pm

December 19, 2009 Start 8:30pm

January 16, 2010 Start 8:30pm

Donation \$10.00

P.A.D./GPCCD Sports Fundraising

Deaf Poker Tournament

Saturday – November 28th, December 26th 2009, January 30th 2010

Open at 7:00pm Start 8:30 PM

NO LIMIT TEXAS HOLD'EM

\$40.00 Donations At

Pittsburgh Assn of the Deaf /Greater Pittsburgh Community Center for the Deaf

1854 Forbes Ave

Pittsburgh, PA 15219

Chairperson- Jeff Janaszek (JSJDeafbowler@verizon.net)

Pittsburgh Association for the Deaf

Proudly announce that we will have

6TH ANNUAL STEELERS KICK OFF PARTY ON SUNDAY-NOVEMBER 22ND AT 12:00 PM

Donation \$5.00

SHOW us your spirit at deaf club and use your Steelers outfit. (Be creative)

We will have prize for winner 2009 Mr. Steelers and 2009 MS. Steelers.

Any question, please contact Tommy DeFazio at PADSTEELERS@AOL.COM



Cheryl Noschese
James C Noschese
Jean Toner
James Toner
Deb Hast
Carl Kavacic
Don Kovacic
Raymond Gwizdak
Janice Gwizdak
Kathy Campero
Louis Campero
Norman Wesoky
Mary Contestabile
Noreen Jezerski
Joseph Jezerski
Alex Lemanski
Paul L. Mente
Memorial of Richard
Baker
Judy Baker
Jeff Janaszek
John Janaszek Jr. (2)
Dorothy Vasilko (2)
Linda McKay
Sue Babich
Mark Babich
Robert Maher Jr.
Angela Mahnick
JoJo Trozzo
Audrey Warrick
Joe Hezlep
Betty Hezlep
Helene Ghinassi
Anne Murphy
Sarah Ann Schwartz



Nancy Sipes
Ralph Sipes
Dave Sipes
Tricia Sipes
Kolton Sipes
Rafi Diaz
Lawrence Hast
Amber Smith
Bobbie Jo Duffy
Mark Kemmerer
Mark Kite Sr.
Barbara Kite
John Biega
Gloria Biega
Donald Draucker
Joyce Draucker
Shirley Fisher
Charles Fisher
Jean Gum
Paul Gum
Andrea Scheidmantel
Brad Scheidmantel
Valentine J. Wojton III
Jennifer M. Wojton
John MacWilliams
Therease
MacWilliams
Richard Wilt
Yvonne Wilt
Laverne Cimarolli
Theresa Lahood
Robert Lenzi
Patricia Lenzi
Catherine Haley
Betty Pagliaro



Timothy Black
James C. Cuda
John J. Muszynski
Kathleen Muszynski
Joel Carr
Ronald Speer
Thomas DeFazio
Louis DeFazio
Todd Langer
Linda Langer
Robert Andrasik
Darrin Majocha
Tina Bloom
Ricky Bloom
Nancy Cordova
Tyce Olean
Kim Olean
Holly Mendel
Ronna Goldberg
Virginia John
Sheila Smith
Louie Nethen
Leo Dyczewski
Jean Dyczewski
Josie Conte
John Welch
Richard Siegwarth
Audrey M. Weiss
Mary Anne Rebish
Maria Borucinski
Verla Majocha
Donald Majocha
Bob Noschese
Joyce Heckman
Nancy Simmons



Donna Bennett
Doris Trozzo
Ben Rolewitz
Linda Majocha
Arthur Majocha
Kathy Conte
Tony Conte
Marilyn Sharkey
Clifford Sharkey
Ann L. Smith
Bill Vasilko
Janet Vasilko
Gloria Asbury
Sylvia Urbanksi
Larry Sullivan
Donna Sullivan
Shirley Manol
Lorraine Musial
Margie Coyne
Mke Coyne
Jimmie Overly
Cynthia Overly
Della Cole
Franklin Cole
Lori Ann LaSorsa
Irene Hearn
Andy Powaski
Tom Brown
Meg Brown



Are You **Confused** About
10-digit videophone numbers?
JOIN Dr. Z (Phil Bravin)
For a Town Hall Forum
to learn more about the FCC's decision
to adopt 10-digit numbers.
FIND OUT.
... Why do you need a local number?
... How do you know if your number
has been registered? **AND MORE!**

Food & refreshments will be served.
WHEN?
6:00 pm - 8:00 pm, Monday, November 9th

WHERE?
Pittsburgh Association of the Deaf
1854 Forbes Ave.
Pittsburgh, PA 15219-5836

CONTACT?
msheppeck@csdvrsoutreach.com by Nov. 6th

**Steelers vs Denver Broncos on Monday Night on
November 9th, 2009. Come on down for Workshop provide
by ZVRS.**

**IMPORTANT TO RSVP To Maria Sheppeck by Nov. 6th
Reason for Catering!!**

msheppeck@csdvrsoutreach.com